

# Stakeholder Engaged Equitable Decarbonized Energy Futures



**Vision:** Prepare a *diverse group of future energy sector leaders* to tackle challenges through an interdisciplinary, equity-driven, multi-stakeholder approach and *enable equitable energy decarbonization*.



## LEARNING GOALS (OBJECTIVES)

- **Goal 1:** Understand stakeholder engagement, equity, and interdisciplinarity in energy decarbonization.
- **Goal 2:** Develop skills that integrate stakeholder perspectives, equity, and interdisciplinary research.
- **Goal 3:** Improve URM participation in energy sector.
- **Goal 4:** Establish novel interdisciplinary Masters & PhD programs on sustainability, environment, and energy decarbonization.



## PROGRAM OUTCOMES

- Meet learning objectives (LOs)
- Workforce preparedness of trainees
- Improved participation of URM groups



## LONGER-TERM OUTCOMES

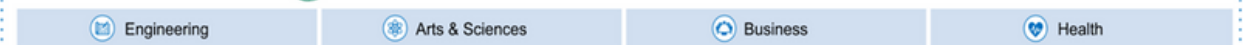
- Variety of professional tracks and leadership roles
- Impactful training resources

## PROGRAM PILLARS (LEARNING OBJECTIVES)

SIE (1, 2, 4, 5, 8, 9)	EE (2, 3, 6, 7)	CP (2, 6, 7)	MIR (1, 2, 3, 4, 5, 6, 7, 8, 9)	Int (1, 2, 5, 6, 7, 9)	PDL (5, 9)	CoB (2, 5, 7, 9)
---------------------------	--------------------	-----------------	------------------------------------	---------------------------	---------------	---------------------

## BRIDGING ACROSS DISCIPLINES

### INSTITUTE FOR CYBER PHYSICAL INFRASTRUCTURE & ENERGY



Banerjee (ME)



Kishore (EE)



Pooley (Policy)



Lamadrid (Eco)



Husic (Evaluator)



Romero (ME)



Moazeni (CEE)



Ramage (EES)



Holland (Pol. Sci)



Choi (Health)

### Acronyms for SEED Program Pillars and Responsibilities:

SIE Stakeholder Engagement EE Ethics & Equity CP Certificate Program MIR Multimodal Research Int Internships PDL Professional Development & Leadership CoB Community Building

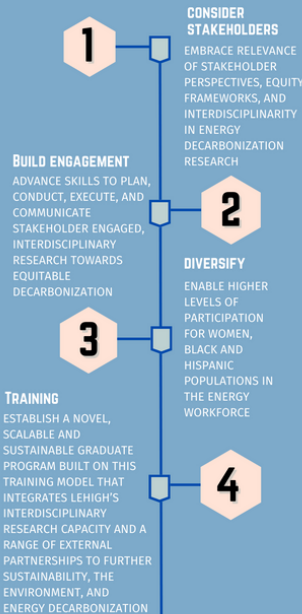


The SEED-EF is an interdisciplinary training program. Students from Lehigh's five colleges will participate in this training program while earning their Ph.D., M.S., and M.A. degrees in their home departments.

By participating in the SEED-EF cohort, trainees will participate in any or all aspects of the following program features:

- Professional & leadership opportunities and internships
- Certificates in Energy Policy and Energy Engineering
- Stakeholder engaged courses and workshops
- Community-building events
- Multidisciplinary team research
- Ethics and Equity coursework

## PROGRAM GOALS



NRTSEED.LEHIGH.EDU

## About Lehigh University

Recognized among the nation's premier research universities, Lehigh provides an academically rigorous experience to a community of more than 7,000 students.

Our small size, ideal student-to-faculty ratio, and vibrant campus allow students to collaborate on projects in and out of the classroom. Lehigh offers a "friendly community-oriented atmosphere on a hilly campus that is beyond beautiful," according to *The Princeton Review*.

